

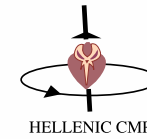
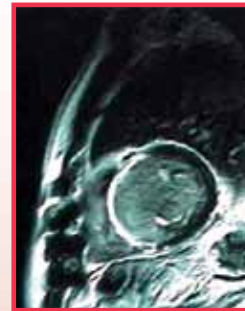
ORGANIZING COMMITTEE

- Maria Kalatzi
- Sophie Mavrogeni
- Antony Aletras
- Gerald Pohost
- Maria Kiaffas
- Gregory Pavlidis
- Massimo Lombardi
- Frank Rademakers
- Denis V. Cokkinos

SCIENTIFIC COMMITTEE

- D.V. Cokkinos
- G. Pohost
- A. Aletras
- P. Nihoyannopoulos
- S. Prasad
- M. Lombardi

Γραφιστική επιμέλεια: «Γράμμα»[®], τ. 2310 926629



HELLENIC CMR



Dept. Cardiology, Onassis Cardiac Surgery Center and Cardiovascular MRI WG of the Hellenic Cardiac Society

10th Cardiovascular MRI w o r k s h o p

ATHENS, 18 SEPTEMBER 2010

Scientific Programme

endorsed by

and accredited by

Cardiovascular
Magnetic Resonance
ESC Working Group



EUROPEAN
SOCIETY OF
CARDIOLOGY[®]



SCMR



EBAC[®]



Eugenides Foundation
387 Syngrou Avenue, Athens, Greece

**10th Cardiovascular MRI workshop, Athens 18 September 2010**

Scientific Programme endorsed by ESC WG on cardiovascular Magnetic resonance and Society for Cardiovascular MR (SCMR) and accredited by EBAC

09.00-09.15 Welcome - **G. Pavlidis****CMR: INTRODUCTION - MAIN APPLICATIONS
IN CARDIOLOGY AND CARDIAC SURGERY**Chairpersons: **G. Palatianos - S. Rammos**09.15-09.30 *CMR Introduction-Sequences*
A. Aletras09.30-09.45 *CMR safety*
K. Pamboukas09.45-10.00 *CMR in Congenital Heart Diseases*
M. Kiaffas10.00-10.15 *CMR in Thalassemia*
A. Kattamis10.15-10.30 *What is LGE? Clinical value for the cardiologist*
S. Mavrogeni10.30-10.45 *What is LGE? Clinical value for the cardiac surgeon*
F. Mitropoulos10.45-11.15 Discussion
Discussants: **S. Brili, D. Tsiapras, V. Vartela, I. Ikonomidis**

11.15-11.45 Coffee break

CMR IN DIABETES**1. Cardiac involvement in diabetes. CMR evaluation**Chairpersons. **V. Pyrgakis, D.V. Cokkinos**11.45-12.00 *Diabetes Mellitus and Coronary Artery Disease: The pathophysiological interpretation of strong correlation*
A. Melidonis12.00-12.15 *Stress CMR in Diabetes*
T. Karamitsos12.15-12.30 *CMR evaluation of Viability in Diabetes*
M. Kalantzi12.30-12.45 *MRA in Diabetes*
P. Danias12.45-13.15 Discussion
Discussants: **K. Perreas, G. Roussakis, G. Stavridis, G. Kantidakis****10th Cardiovascular MRI workshop, Athens 18 September 2010**

Scientific Programme endorsed by ESC WG on cardiovascular Magnetic resonance and Society for Cardiovascular MR (SCMR) and accredited by EBAC

13.15-13.45 **Lecture (Auditorium)**
Towards a new artificial heart
Prof. Alain Carpentier

13.45-14.30 Light Lunch

**2. CMR evaluation of LV function – metabolism
and peripheral vessels in Diabetes**Chairpersons: **R. Mastorakou, A. Dritsas**14.30-14.45 *Diabetic Cardiomyopathy: Is it an independent entity?
The opinion of Diabetologist*
A. Koutsovassilis14.45-15.00 *Diabetic Cardiomyopathy: Is it an independent entity?
The opinion of Cardiologist*
P. Davlouros15.00-15.15 *CMR in the evaluation of LV dysfunction in diabetes*
S. Lerakis15.15-15.30 *CMR of peripheral vessels in Diabetes*
N. Kelekis15.30-15.45 *CMR Spectroscopy in Diabetes*
G. Pohost15.45-16.15 Discussion
Discussants: **J. Parissis, G. Filipatos, S. Katsilouli, A. Roussakis****3. Multimodality imaging in diabetes**Chairpersons: **P. Vardas, G. Pavlidis**16.15-16.30 *Echo in Diabetes*
K. Ageli16.30-16.45 *SPECT in Diabetes*
T. Kitsiou16.45-17.00 *CT in Diabetes*
J. Vasiliadis17.00-17.15 *IVUS in Diabetes*
J. Iakovou17.15-17.30 *Role of multimodality imaging in the evaluation of diabetes*
F. Rademakers17.30-18.00 Discussion
Discussants: **G. Athanasopoulos, O. Karapanagiotou, J. Paraskevaïdis, S. Kyrzopoulos**